



СУРИН, ПХУКЕТ · THAILAND

6-Bedroom Villa in Сурин

ОБЗОР ОБЪЕКТА

6-комн. вилла · Сурин, Phuket

 6 СПАЛЕН

 7 ВАННЫХ

 3 ЭТАЖЕЙ

Nestled high on the side of a mountain, Villa Beyond offers panoramic views of Phuket's Bang Tao's village and the Andaman Sea. This spacious seven-bedroom modern villa has plenty of style, luxurio...

ХАРАКТЕРИСТИКИ

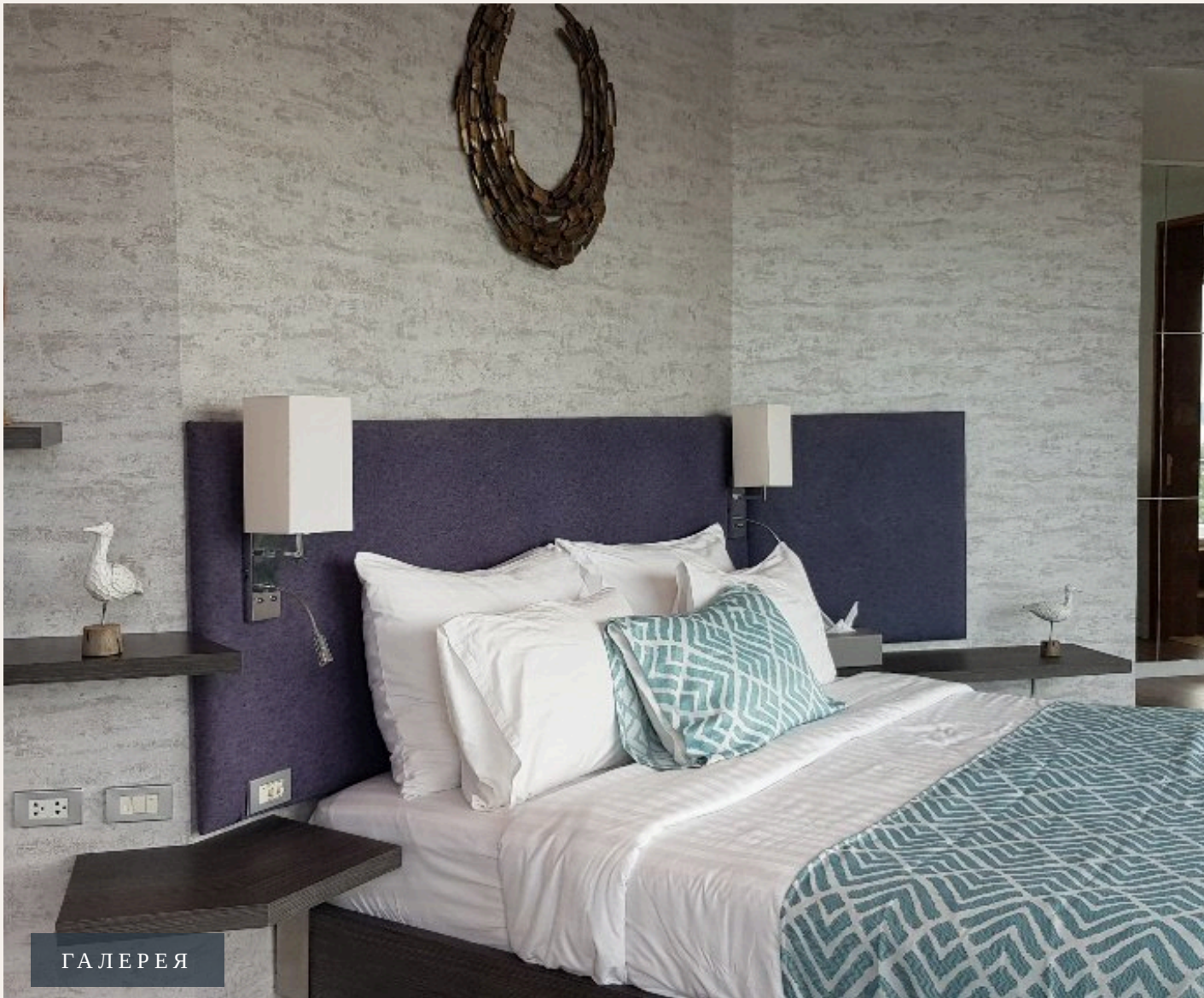
Сделка	Аренда	Тип	Вилла
Вид	Море, Бассейн, Горы	Мебель	С мебелью
Этажей	3	До пляжа	3000 м





ГАЛЕРЕЯ





ГАЛЕРЕЯ





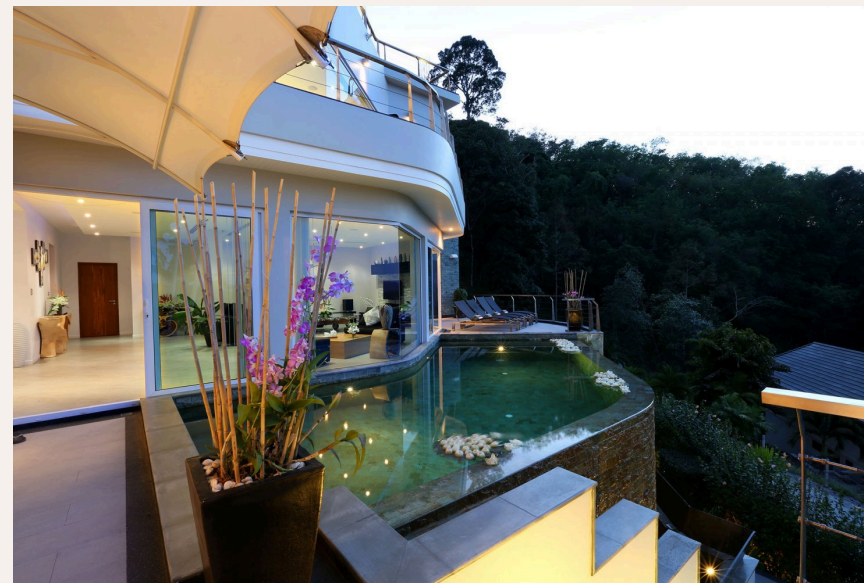


ГАЛЕРЕЯ





ГАЛЕРЕЯ



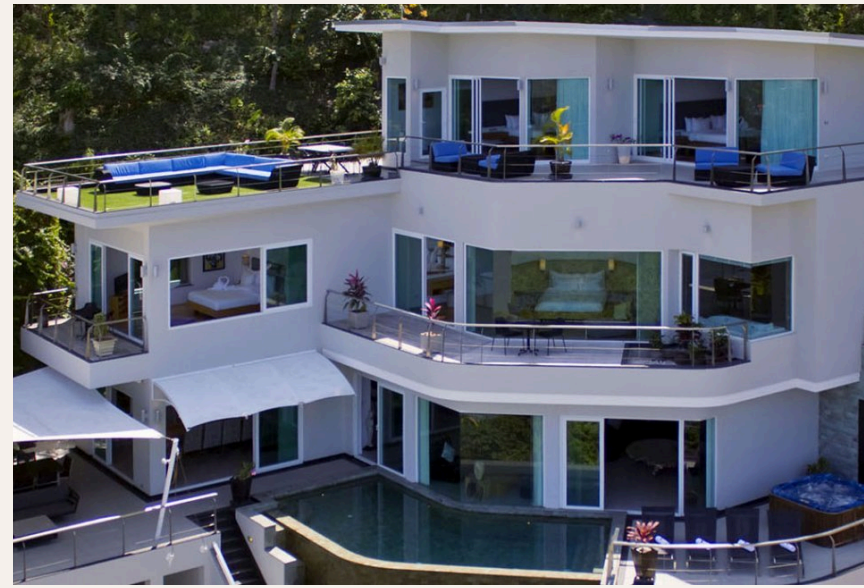


ГАЛЕРЕЯ





ГАЛЕРЕЯ





ГАЛЕРЕЯ



ОПИСАНИЕ ОБЪЕКТА

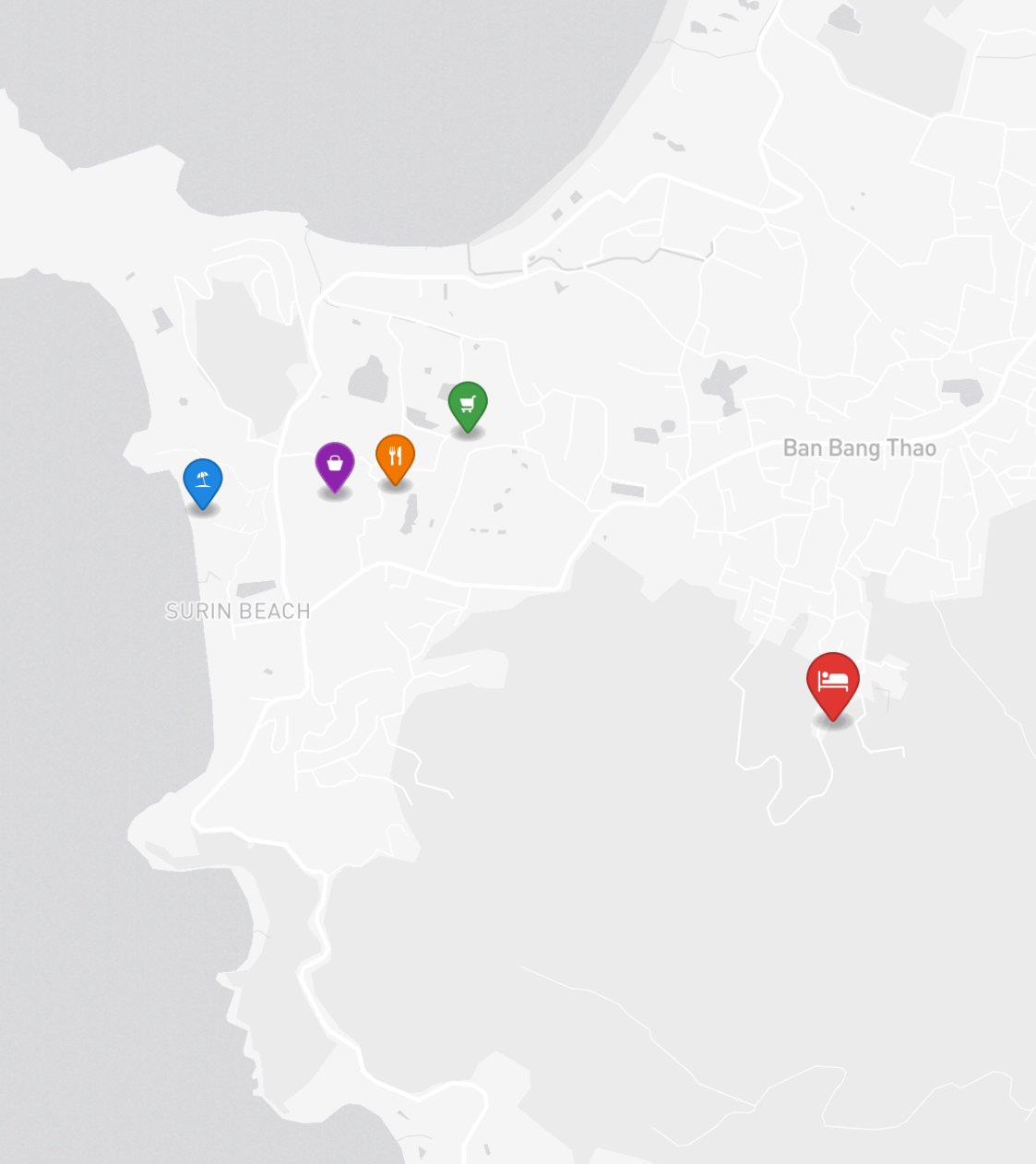
“Add to the mix a stunning infinity pool and friendly staff team, including a personal chef, and life is beyond perfect.”

Nestled high on the side of a mountain, Villa Beyond offers panoramic views of Phuket's Bang Tao's village and the Andaman Sea. This spacious seven-bedroom modern villa has plenty of style, luxurious comfort and privacy. Add to the mix a stunning infinity pool and friendly staff team, including a personal chef, and life is beyond perfect. Villa Beyond is an exclusive holiday villa sitting pretty on the mountainside and graced with fabulous views and peaceful surroundings. Hidden away on a private road just a few minutes from Bang Tao, this seven-bedroom villa has an attentive dedicated staff and is an ideal setting for winding down and spending time together. Villa Beyond's calm ambiance is enhanced by stylish décor, hypnotic views and tropical birdsong in the garden.

A blend of natural materials results in a simple but beautiful interior, complemented

by bespoke furniture artfully created from wood and metal. The seven bedroom suites provide discreet hideaways with large, comfortable beds and panoramic views, particularly the master suite with its massive soaker tub and jacuzzi, big enough for two. Time at Villa Beyond stands still as days are spent swimming and sunbathing. A refreshing dip in the infinity pool or a lazy afternoon lounging on the terrace to the sound of the waterfall will soothe away any worries. Enjoy a relaxing breakfast on the sail-shaded outdoor dining terrace, or up on the rooftop where there is nothing to disturb the peace. Bliss out with a massage and delight in the delicious Thai dishes prepared by your in-villa chef. As evening falls, the island and ocean view transforms into a vista of stars and twinkling lights, inviting you to venture out and discover Phuket's vibrant nightlife.





РАСПОЛОЖЕНИЕ

Сурин — «Ряд миллионеров», элитный район с дизайнерскими бутиками и ресторанами высокой кухни.

• 3000 М ДО ПЛЯЖ

• 20-45 МИН ДО АЭРОПОРТ ПХУКЕТА

• 15-30 МИН ДО CENTRAL PHUKET

- **Пляж:** Пляж Сурин
- **Шопинг:** The Plaza Surin
- **Рестораны:** Bimi Beach Club
- **Супермаркет:** Tops Daily Surin