



СУРИН, ПУКЕТ · ТАИЛАНД

## 4-Bedroom Villa in Сурин


## ОБЗОР ОБЪЕКТА

## 4-комн. вилла · Сурин, Phuket

 4 СПАЛЕН

 5 ВАННЫХ

 400 КВ.М

 2 ЭТАЖЕЙ

 2 ПАРКИНГ

Magnificent, luxurious Thai-style Villa perched on a mountain tranquil estate overlooking Surin and Bang Tao beaches on Phuket's beautiful west coast. Villa of 400m2 interior, 5 bedrooms with King-s...

## ХАРАКТЕРИСТИКИ

Сделка	Аренда	Тип	Вилла
Вид	Море	Мебель	С мебелью
Этажей	2	Паркинг	2
До пляжа	500 м	Предложение	Частный владелец









ГАЛЕРЕЯ





ГАЛЕРЕЯ





ГАЛЕРЕЯ





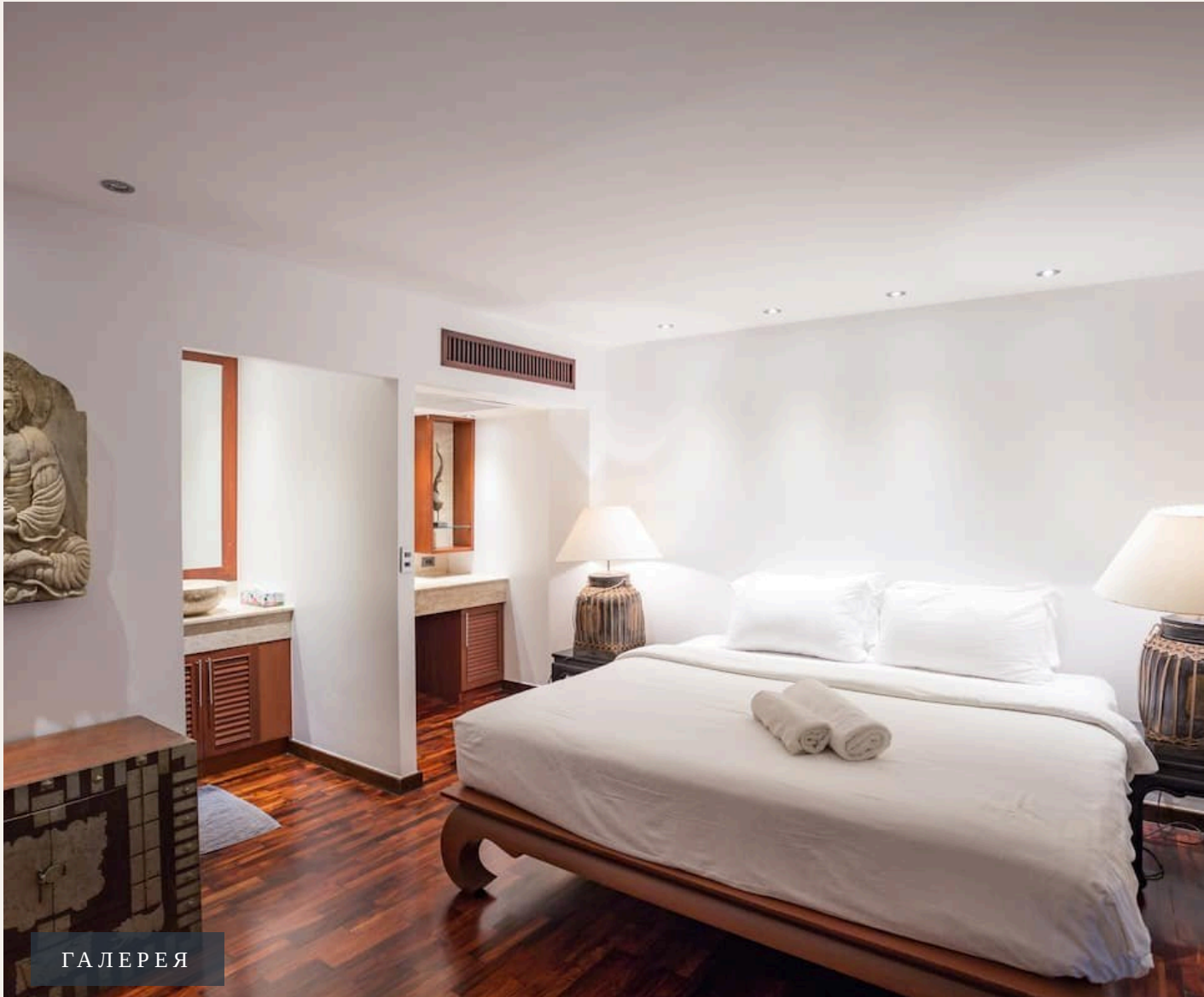
ГАЛЕРЕЯ





ГАЛЕРЕЯ





ГАЛЕРЕЯ



## ОПИСАНИЕ ОБЪЕКТА

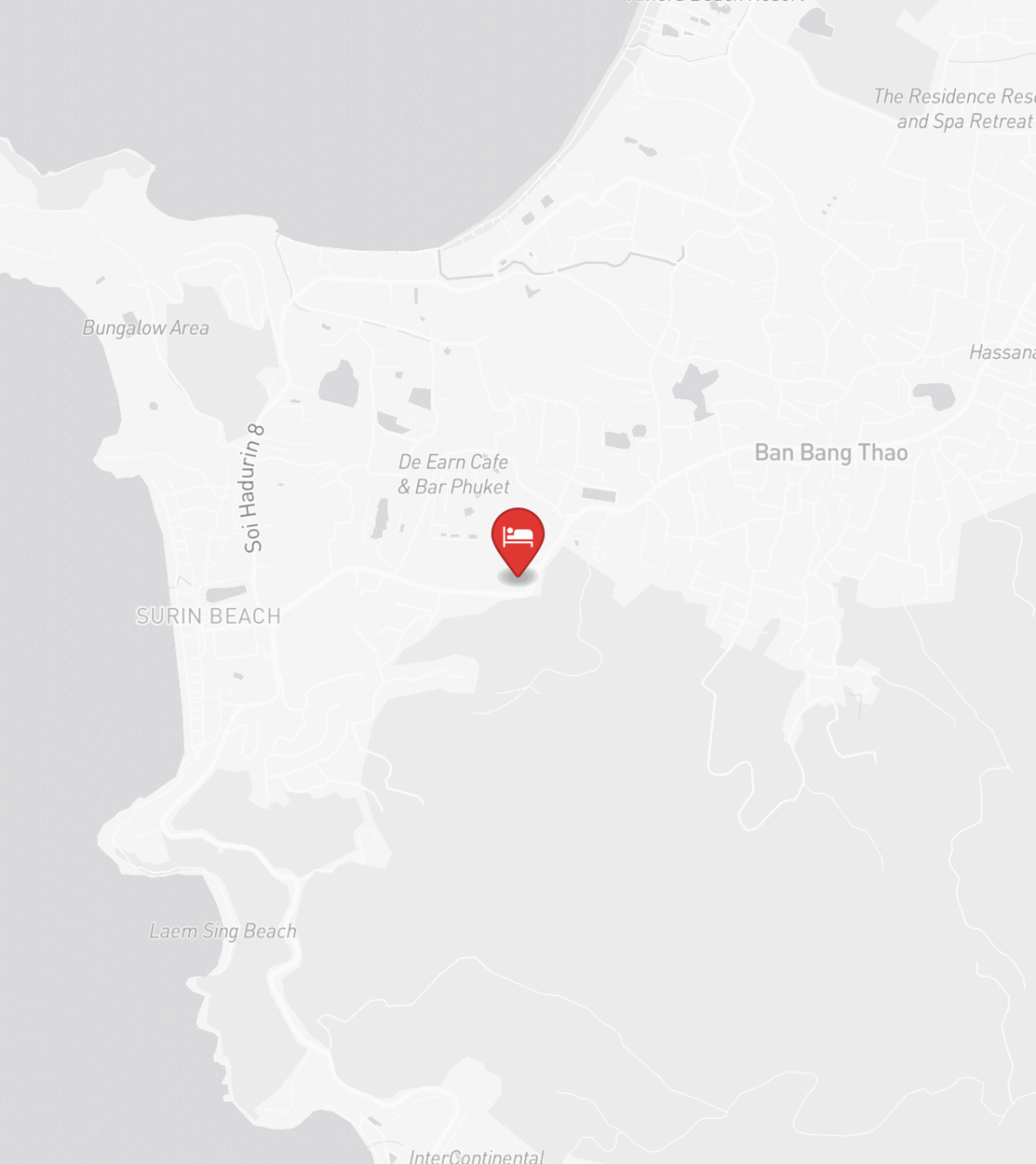
*“All rooms have high vaulted ceiling in teak, tall glasses and windows open to the infinity-edge pool.”*

Magnificent, luxurious Thai-style Villa perched on a mountain tranquil estate overlooking Surin and Bang Tao beaches on Phuket's beautiful west coast. Villa of 400m<sup>2</sup> interior, 5 bedrooms with King-sized beds, en suite bathrooms. Fully furnished and decorated with Asian Art pieces. Infinity-edge pool is 18 x 5 meter with 2 Thai Salas on each side for outdoor relaxing and breathtaking views. Surin Beach is only 10 minutes walk from the villa. Included Breakfast and Two way Airport Transfers. The space Very quiet location and relaxing space, privacy with a personal touch. Unique design with its extensive use of teak wood, notably in the vaulted ceilings which adds grandeur and tropical living. Living room with 55" smart LED TV. High-speed internet, Wi-Fi and cable TV. High level of security in the estate with guards and CCTV cameras. Surin Beach is only 10 minutes walk. Bang Tao beach is only 15 minutes walk or 5 minutes by car. Close by are the famous restaurants: Palm Sea Side

and Catch Beach Club. Spacious, clean and inviting, this tropical Villa is ideal for guests who enjoy spending time outdoor while still in the comfort of their home. The villa has 2 house keepers to take care of you. Guest access. The villa cascades down the hill on two levels encircled by tropical trees and gardens. Upper Level : The entire upper level has a sweeping sea view. It comprises a large elegant living and dining area, a fully equipped kitchen and two master bedrooms.

All rooms have high vaulted ceiling in teak, tall glasses and windows open to the infinity-edge pool. Set on either side of the swimming pool are open Thai sala's for outdoor relaxing and breathtaking views of the Andaman sea and its famous sun set of Phuket's west coast. Lower level : The lower level comprises 2 beautifully decorated bedrooms with en suite bathrooms. A professional gym and yoga is only 8 minutes by car.





## РАСПОЛОЖЕНИЕ

Сурин — «Ряд миллионеров», элитный район с дизайнерскими бутиками и ресторанами высокой кухни.

- 500 М ДО ПЛЯЖ
- 20-45 МИН ДО АЭРОПОРТ ПХУКЕТА
- 15-30 МИН ДО CENTRAL PHUKET

- **Пляж:** Пляж Сурин
- **Шопинг:** The Plaza Surin
- **Рестораны:** Bimi Beach Club
- **Супермаркет:** Tops Daily Surin



Сканируйте для  
построения маршрута



INDREAMS  
Phuket Real Estate

+66 95 258 0305 · +66 84 629 9335

info@indreamsphuket.ru

21/1 Lagoon Road, Boat Avenue

Черенгалай, Таланг, Пхукет 83110



indreamsphuket.ru