

SURIN, PHUKET · THAILAND

5-Bedroom Villa in Samsara Estate

ОБЗОР ОБЪЕКТА

5-КОМН. ВИЛЛА · Surin, Phuket

 5 СПАЛЕН

 5 ВАННЫХ

 728 КВ.М

 2 ПАРКИНГ

The villa is a simply stunning ocean front exclusive property. With incredible ocean views across Patong Bay, and including a sunset set to impress daily. The property has been elegantly designed t...

ЦЕНА ПРОДАЖИ

199,000,000 THB

≈ \$5,685,714

ХАРАКТЕРИСТИКИ

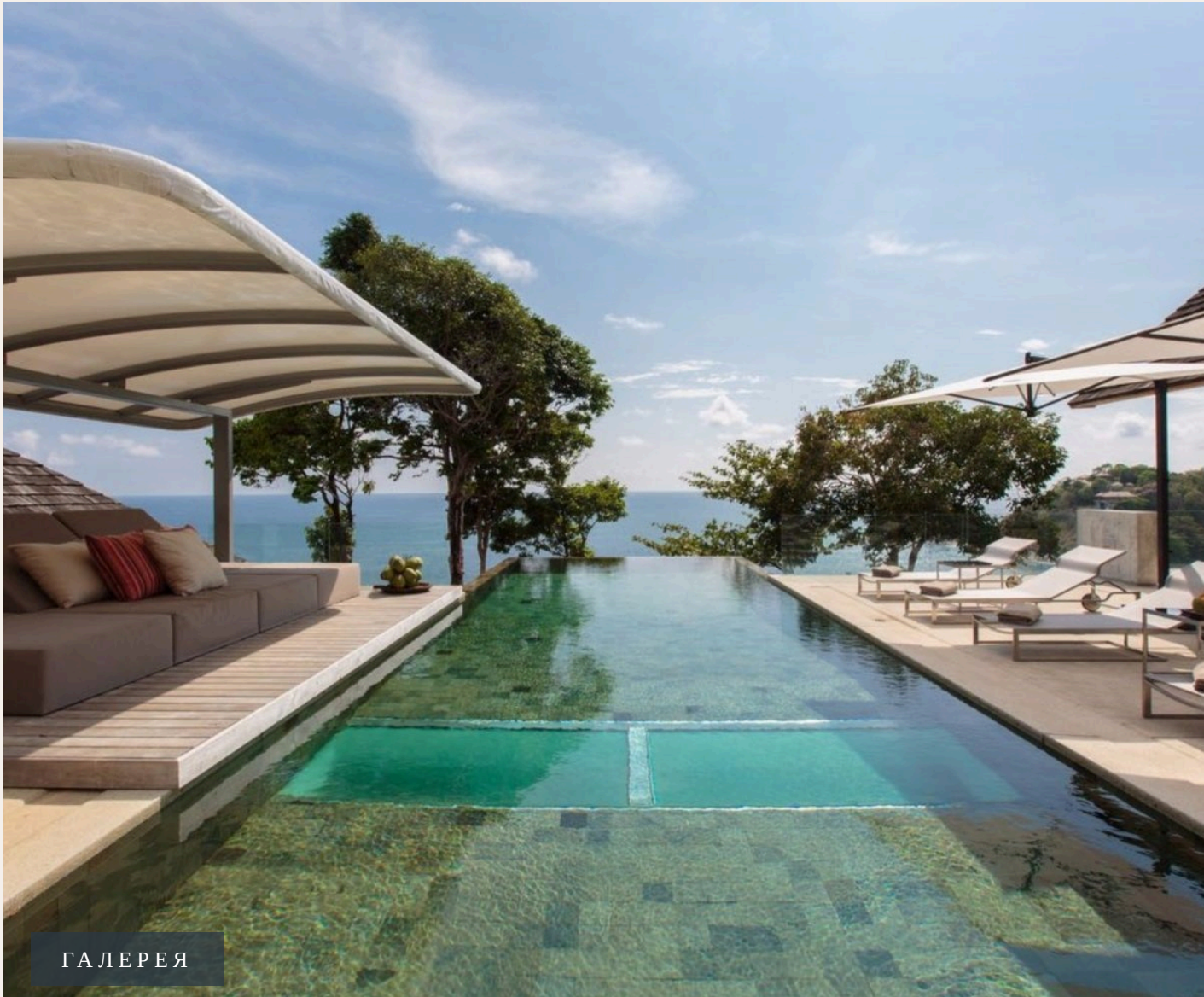
Сделка	Продажа	Тип	Вилла
Проект	Самсара	Вид	Море, Город, Горы
Мебель	С мебелью	Участок	4,000 кв.м
Паркинг	2	До пляжа	700 м
Предложение	Частный владелец	Цена/кв.м	273,352 THB





ГАЛЕРЕЯ





ГАЛЕРЕЯ





ГАЛЕРЕЯ





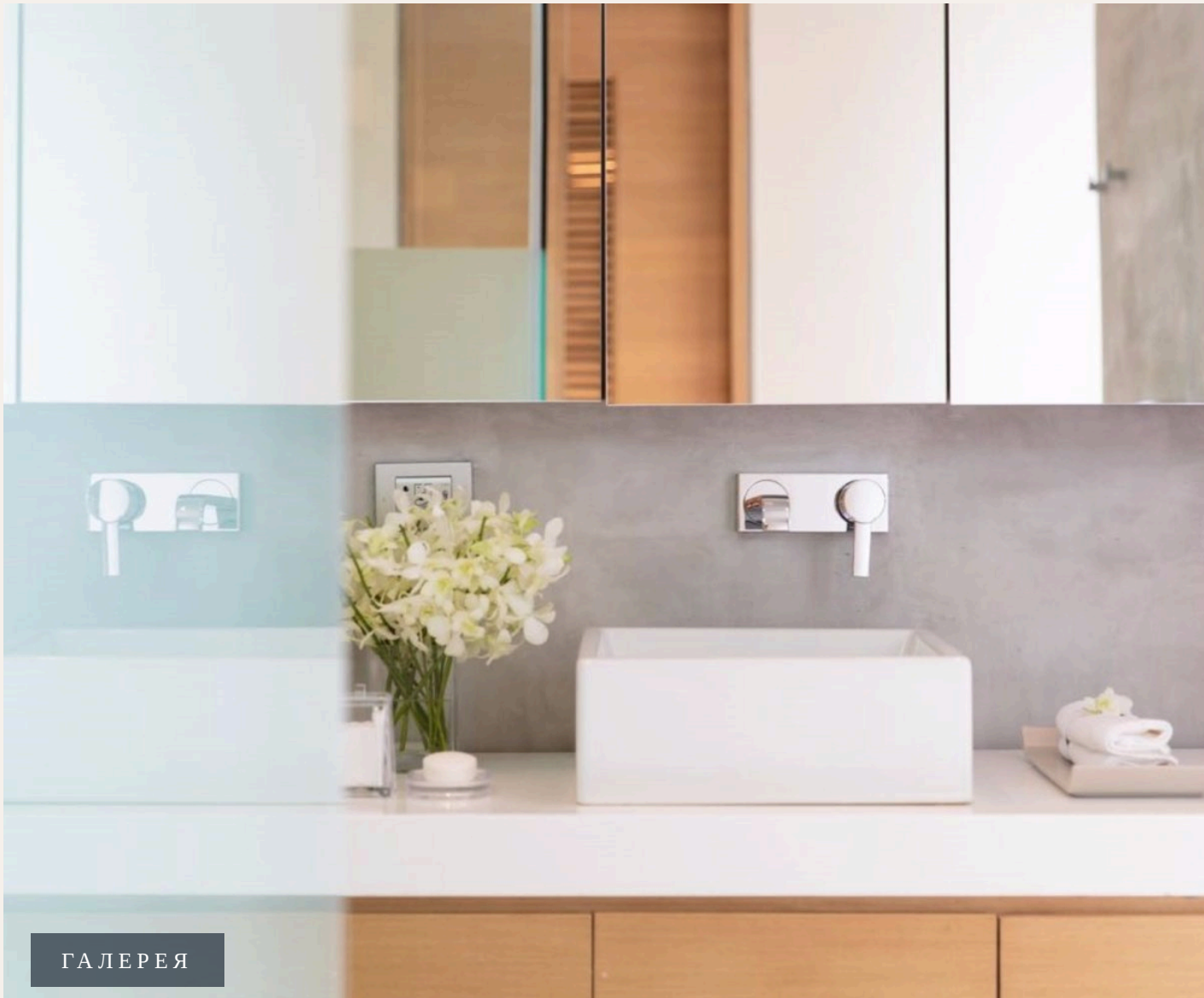
ГАЛЕРЕЯ



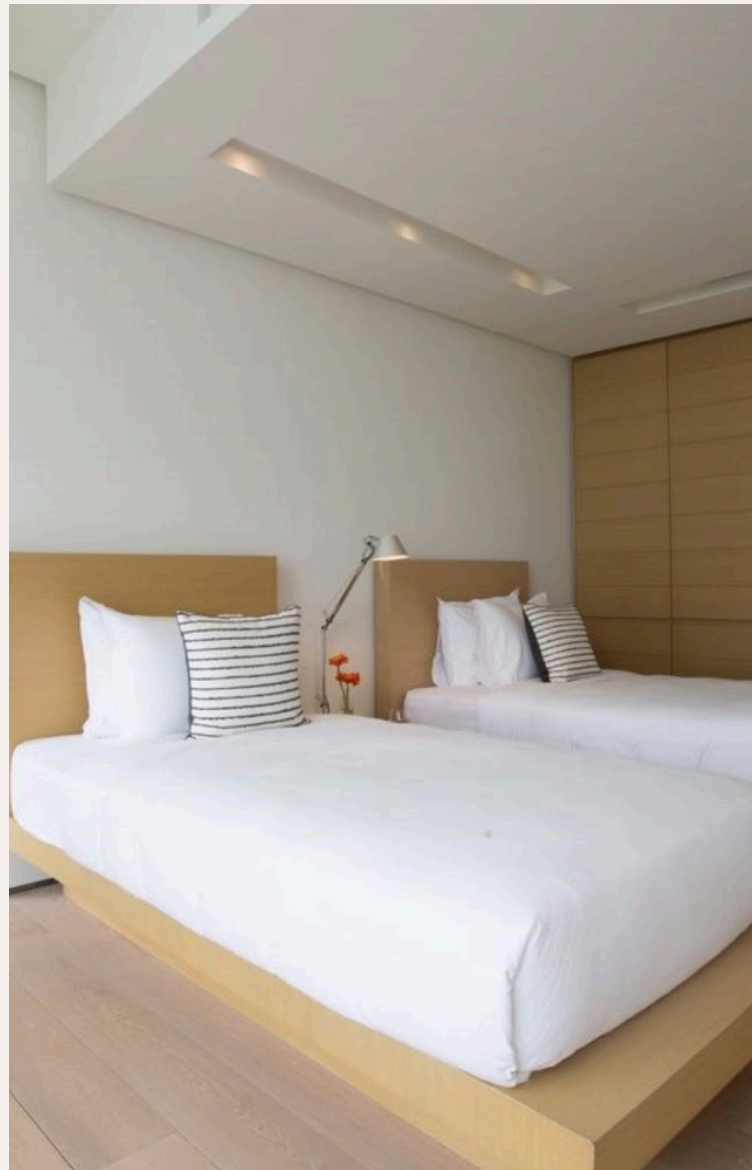


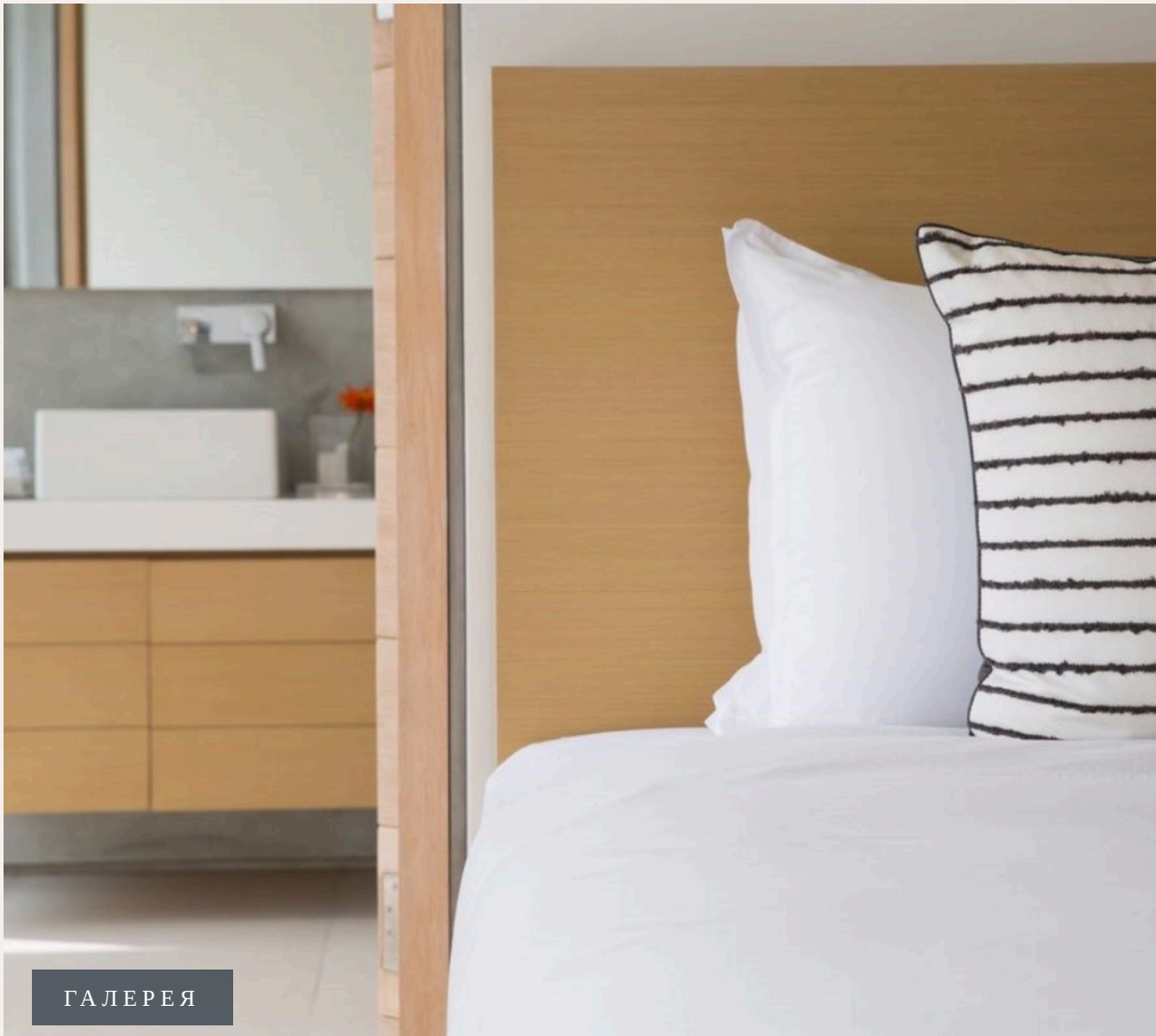
ГАЛЕРЕЯ



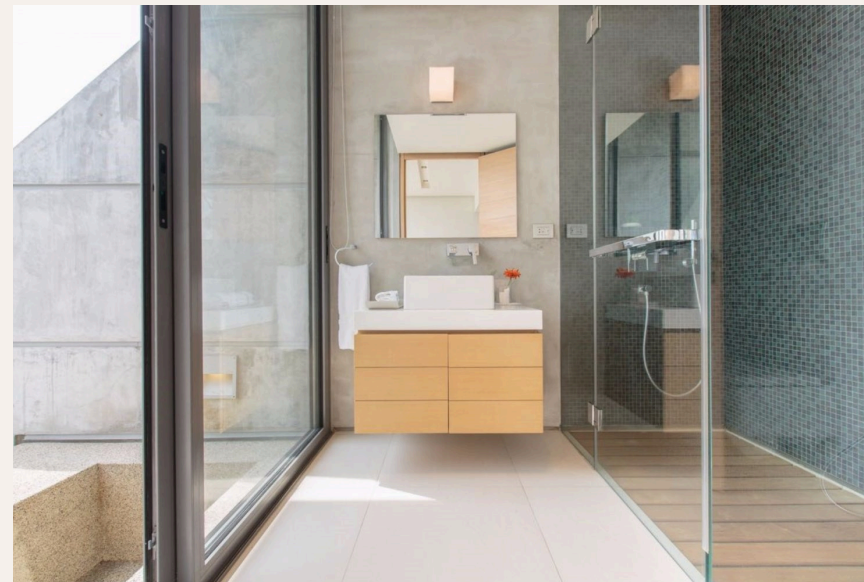


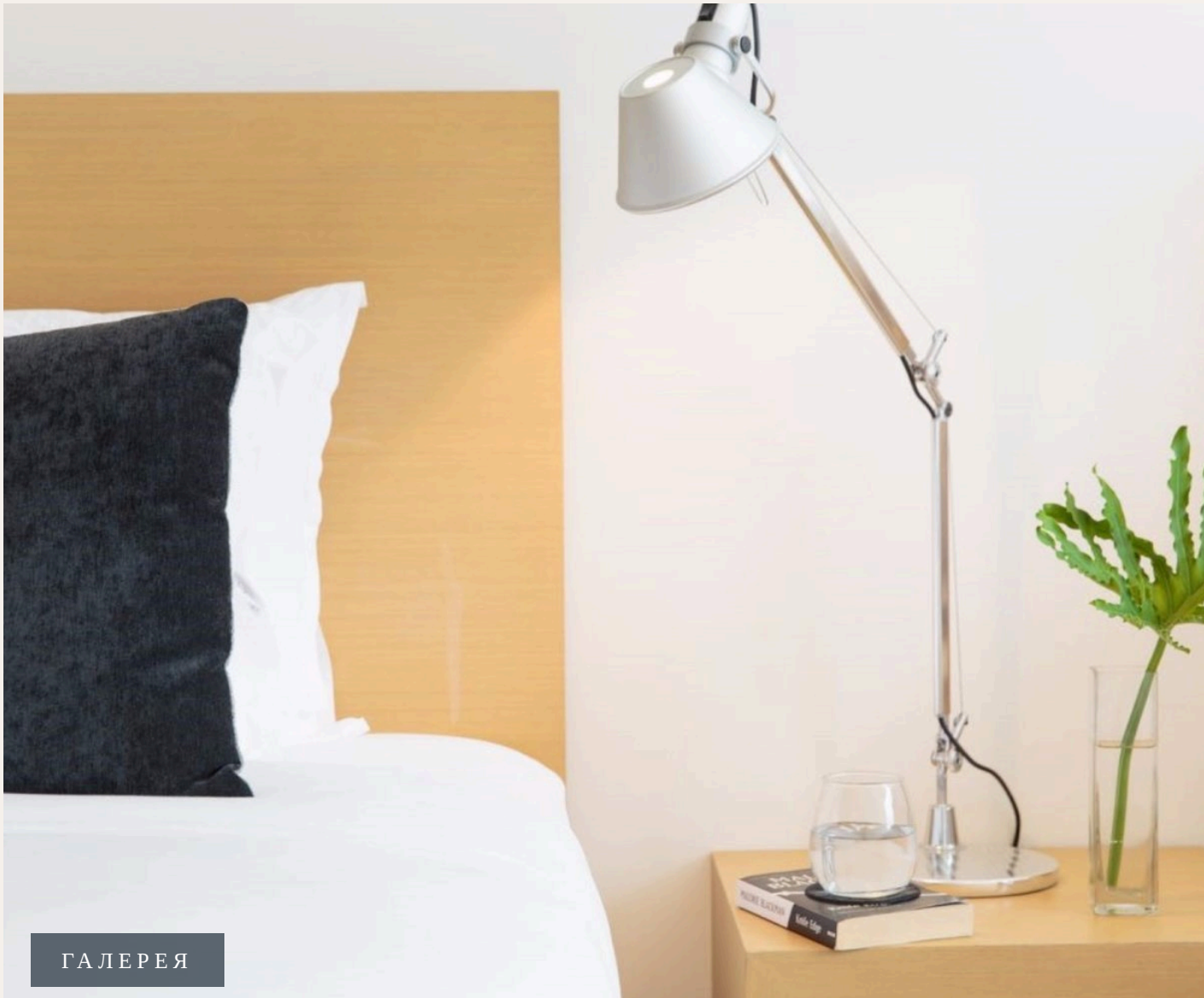
ГАЛЕРЕЯ



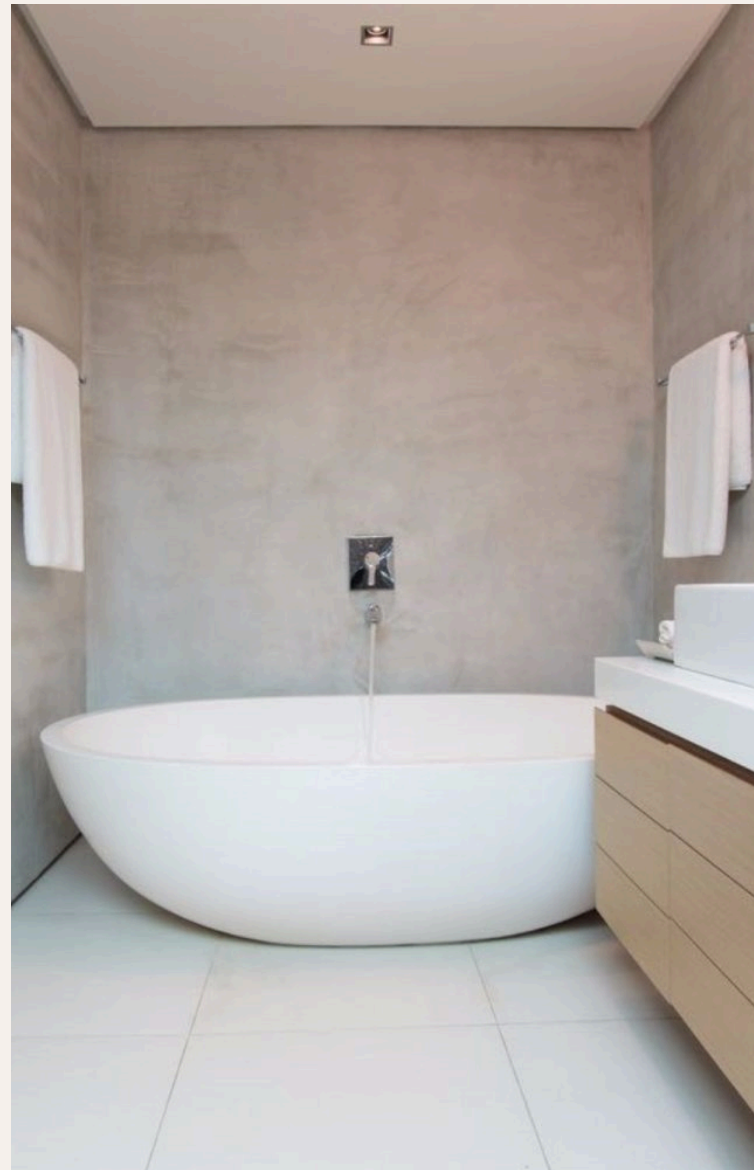


ГАЛЕРЕЯ





ГАЛЕРЕЯ



ОПИСАНИЕ ОБЪЕКТА

“With incredible ocean views across Patong Bay, and including a sunset set to impress daily.”

The villa is a simply stunning ocean front exclusive property. With incredible ocean views across Patong Bay, and including a sunset set to impress daily. The property has been elegantly designed to complement this amazing tropical and natural location. The contemporary design and architecture features clean minimal lines, bold angles and above all quality materials. This ocean front property has over 500 sqm of air-conditioned space and occupies an ocean front plot of approx. 4,000 sqm.

Whilst villa has 5 large, light bedrooms, each with a spectacular ocean view, the focus is on the spectacular glass walled living area. In addition, there are top-of-the-line features to impress any resident or guest, these include: 15-meter infinity edge swimming pool, traditional Thai sala for relaxation and shade, outdoor BBQ with shaded dining

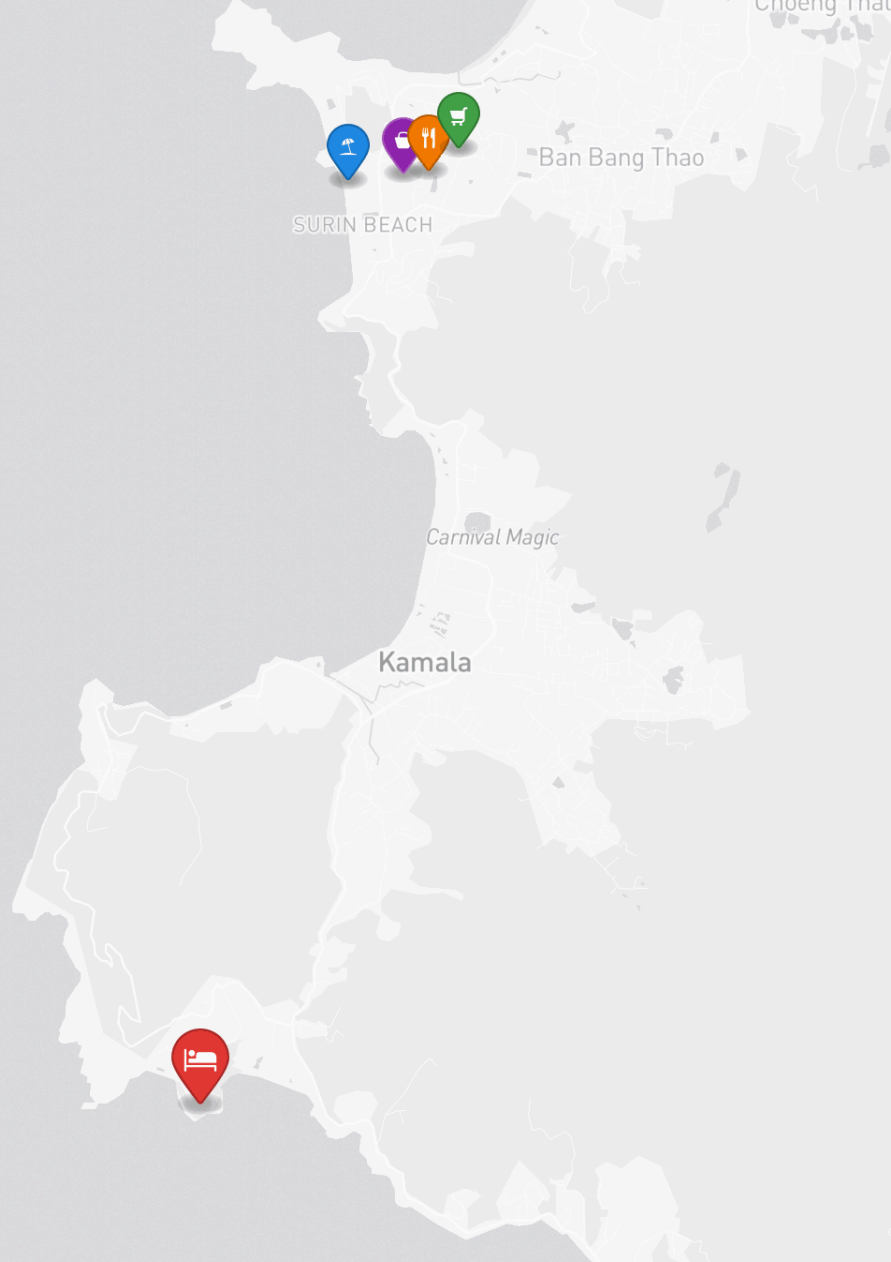
area, outdoor Jacuzzi's, home office, entertainment area including pool table, bar and fully featured media room. The estate is wonderfully positioned on its own headland overlooking the open ocean, Patong Bay and Patong Beach. It is private and secure and yet only 7 minutes' drive to down town Patong and 12 minutes' drive to Surin Beach. There is direct walking access to Nakalay and Blue Coral Beaches from internal estate pathways. Villa owners enjoy preferential access and rates at the new 5 Star Naka resort on Blue Coral Beach. The estate has the most complete infrastructure of any Residential only estate in Phuket. It has its own one million litre water storage facility, two generators and fire hydrant system. There is a dedicated management office from which villas and the estate are maintained and rentals can be arranged.

ИНВЕСТИЦИИ

199,000,000 THB ≈ \$5,685,714

Цена за м²: 273,352 THB





РАСПОЛОЖЕНИЕ

Сурин — «Ряд миллионеров», элитный район с дизайнерскими бутиками и ресторанами высокой кухни.

- 700 М ДО ПЛЯЖ
- 10 МИН ДО БАНГ ТАО
- 10 МИН ДО КАМАЛА

- **Пляж:** Пляж Сурин
- **Шопинг:** The Plaza Surin
- **Рестораны:** Bimi Beach Club
- **Супермаркет:** Tops Daily Surin