



КАМАЛА, ПНУКЕТ · ТАИЛАНД

Роскошная вилла, построенная по индивидуальному проекту вблизи пляжа Камала


ОБЗОР ОБЪЕКТА

## 5-комн. вилла · Камала, Phuket

 5 СПАЛЕН

 5 ВАННЫХ

 530 КВ.М

 3 ЭТАЖЕЙ

Beautiful remote villa " of 370 m2 (Design Award 2019) in Kamala Beach. Located on the mountain slope & 800 m from the beach, you have a unique view over the green hills. Villa 8 is part of a very ...

ЦЕНА ПРОДАЖИ

# 33,000,000 THB

≈ \$942,857

ХАРАКТЕРИСТИКИ

Сделка	Продажа	Тип	Вилла
Вид	Горы	Мебель	С мебелью
Этажей	3	До пляжа	800 м
Предложение	Частный владелец	Цена/кв.м	62,264 THB







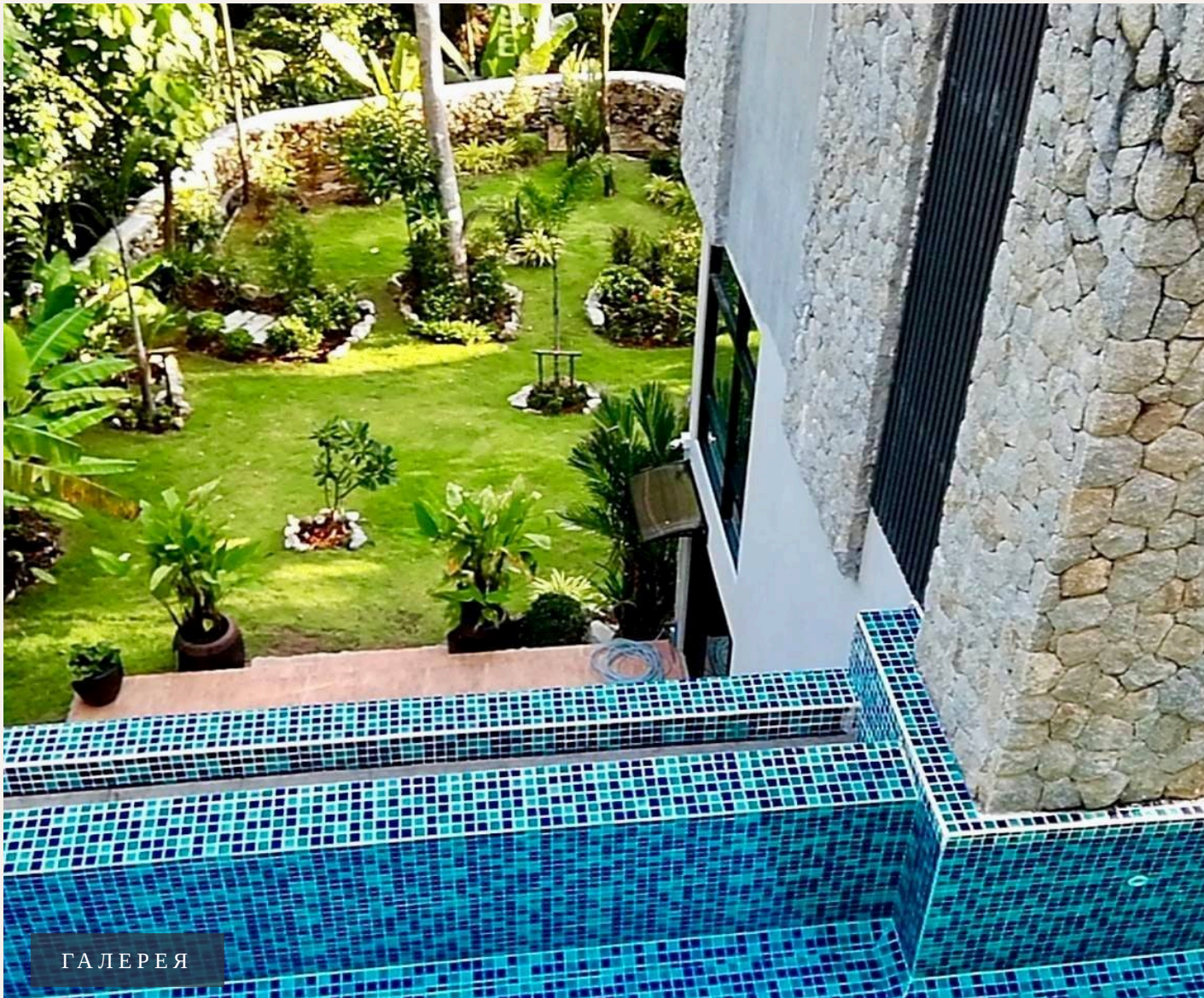
ГАЛЕРЕЯ



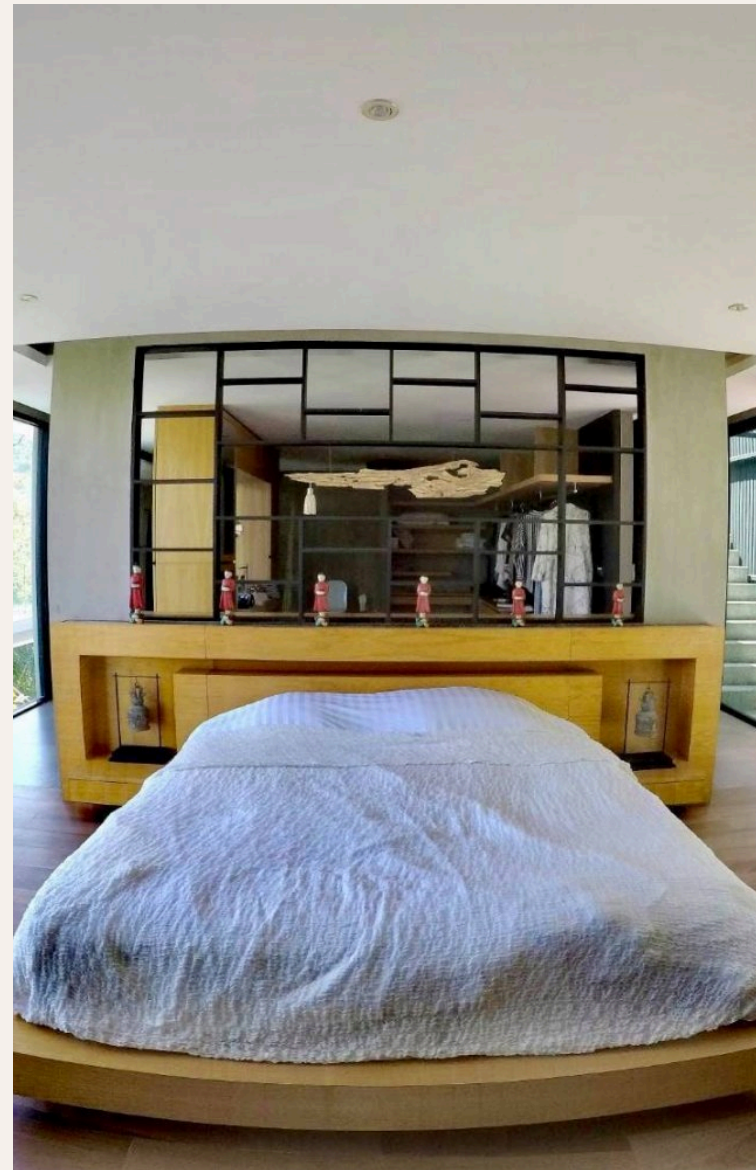


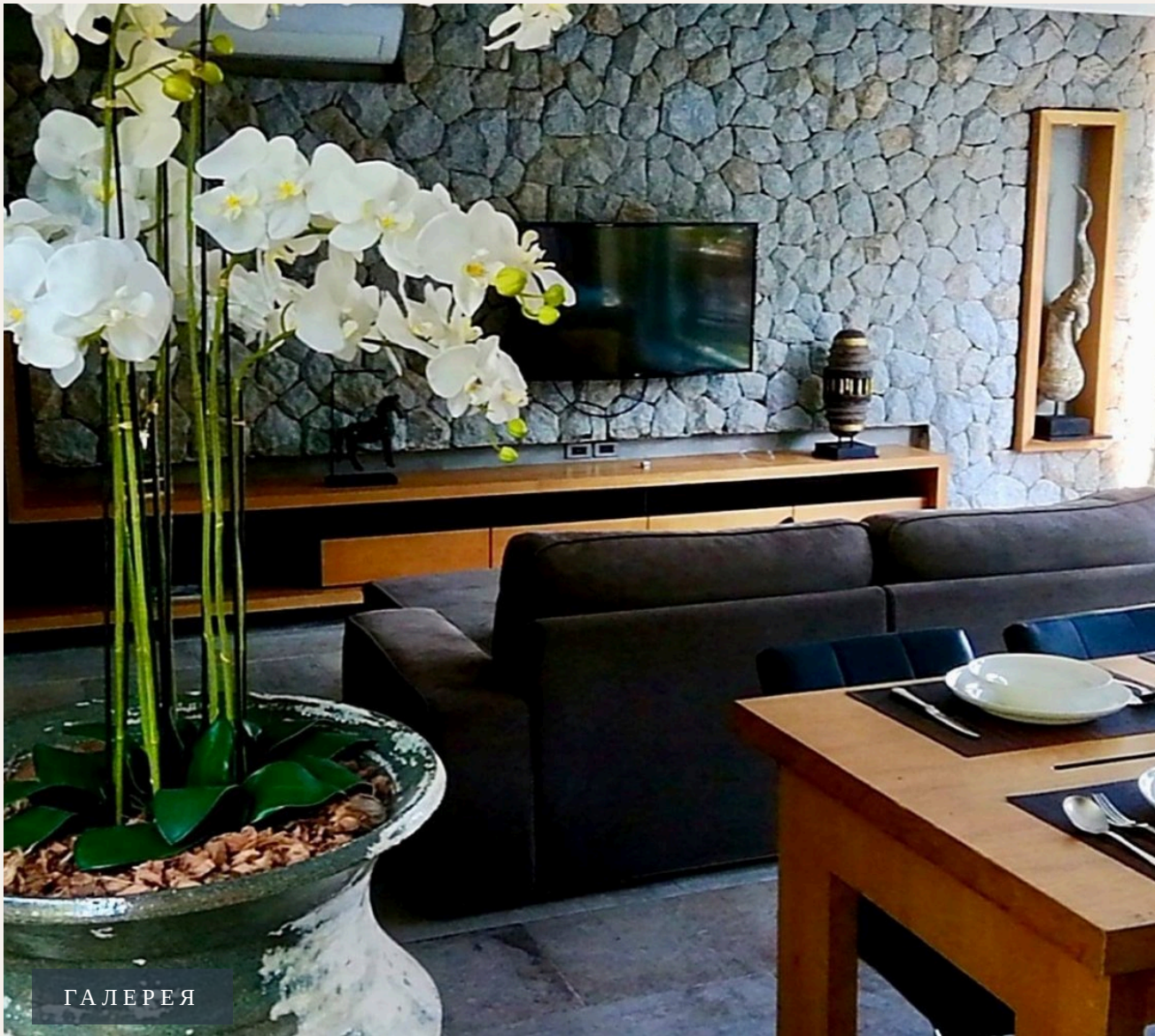
ГАЛЕРЕЯ



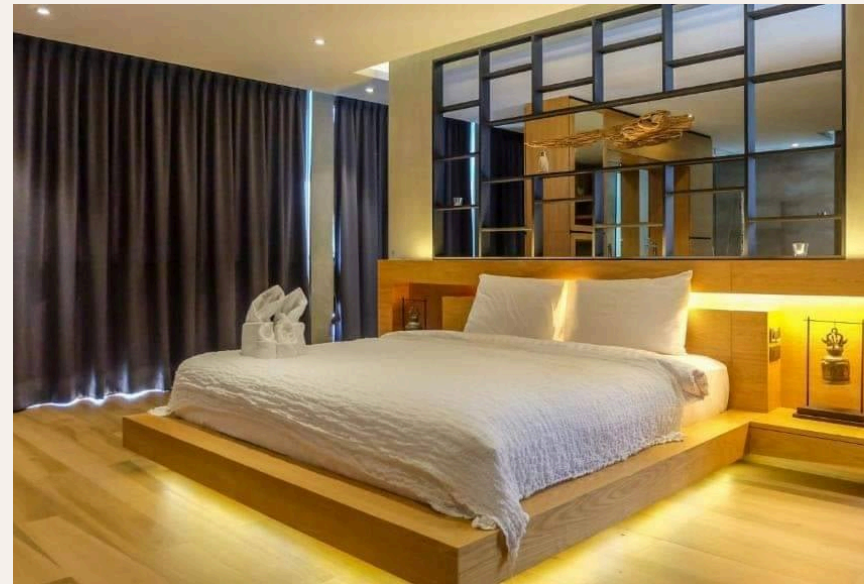


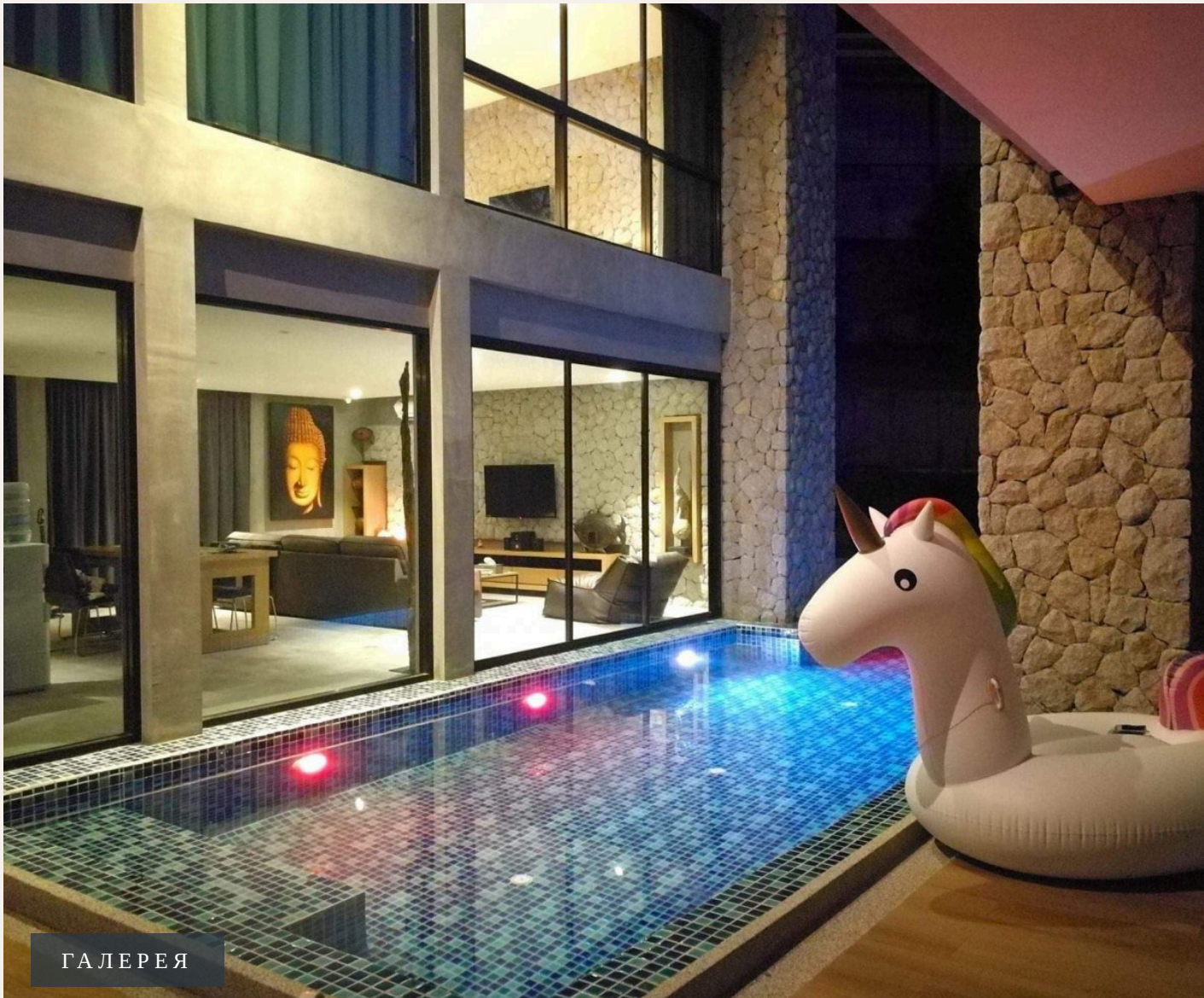
ГАЛЕРЕЯ





ГАЛЕРЕЯ





ГАЛЕРЕЯ





ГАЛЕРЕЯ





ГАЛЕРЕЯ



## ОПИСАНИЕ ОБЪЕКТА

*“All hotel facilities are at your disposal and are free: 2 other swimming pools, fitness, shuttle services 7 x / day to the beach, recliners.”*

Beautiful remote villa " of 370 m2 (Design Award 2019) in Kamala Beach. Located on the mountain slope & 800 m from the beach, you have a unique view over the green hills. Villa 8 is part of a very small hotel complex The Woods Natural Park (small hotel, 8 pavilions and your villa).

All hotel facilities are at your disposal and are free: 2 other swimming pools, fitness, shuttle services 7 x / day to the beach, recliners. The hotel bar / restaurant is open all day long (very affordable price). Excursion agency and rental of motorcycles or cars. There are dozens of small restaurants nearby (average price 5 euro). Café Del Mar (best disco / lounge on the island) and the famous Phuket FantaSea show are located 750 m from Villa 8. 3 Bedrooms: 1 Master Bed Room

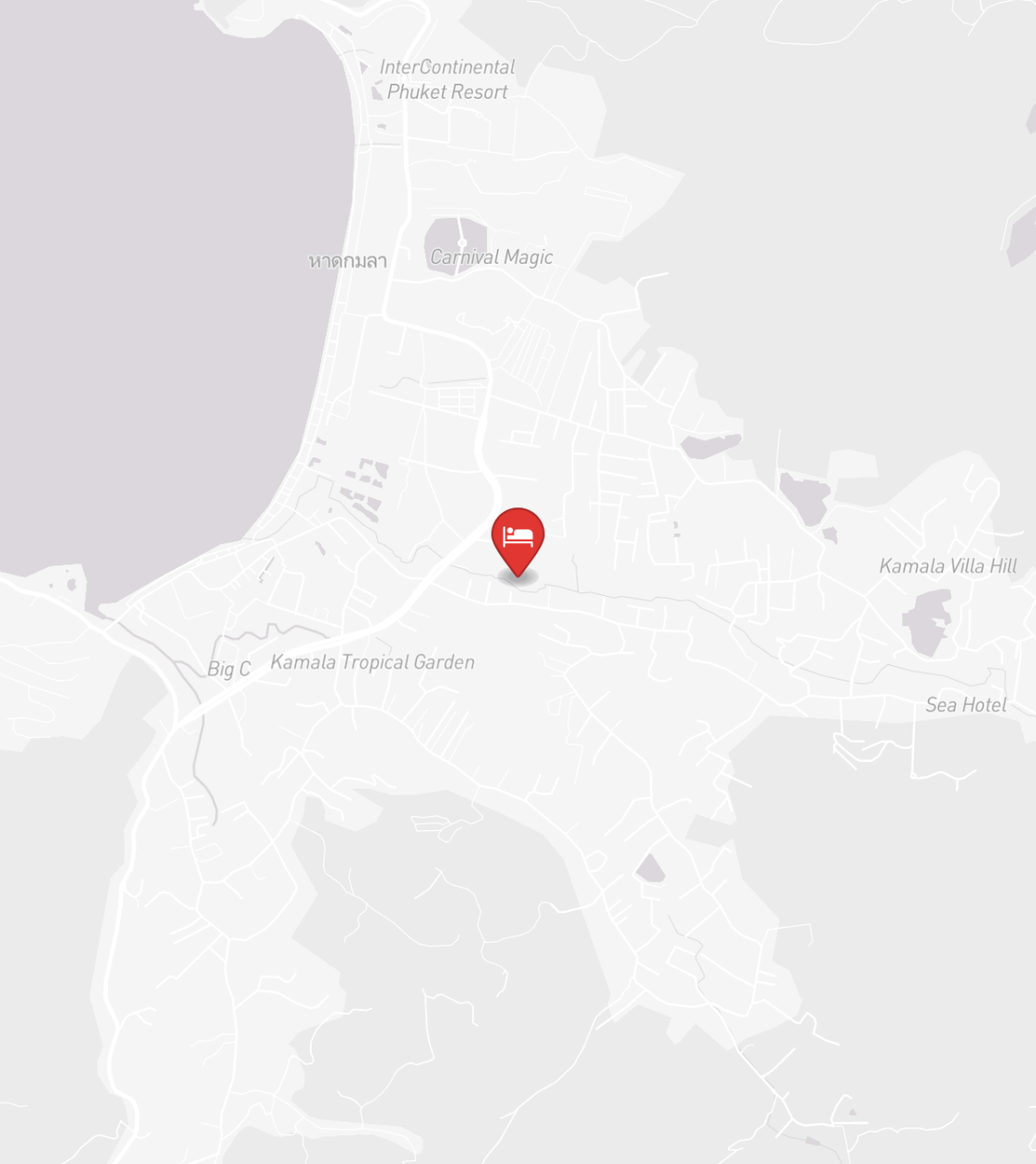
(loft style) with walk-in dresser room 2nd White Room with direct access to the private pool 3rd bedroom with direct access to the private pool. The 3 bedrooms have 1 queen size bed (180 x 200 cm). 3 bathrooms with showers and sink 4 toilets Super-furnished kitchen (Electrolux) with Induction Private garage for 2 cars Large couch-200 cm table with 6 chairs 4 outdoor terraces, of which 2 on the rooftop 13 m private Infinity pool 4 TV Beautiful garden downstairs with banana and mango trees. The hotel service provides maintenance, sheets, towels (2 x / week) Phuket international airport is 28 km away (+/-20 euro / taxi). Patong Nightlife is 10 km away Phuket Town 16 km away You will be greeted at the reception of hotel " The Woods Natural Park ", where you will be offered a drink.

### ИНВЕСТИЦИИ

**33,000,000 THB** ≈ \$942,857

Цена за м²: 62,264 THB





## РАСПОЛОЖЕНИЕ

Камала — уютный посёлок между Патонгом и Сурином, предлагающий спокойную атмосферу с видами на закат.

- 800 М ДО ПЛЯЖ
- 20-45 МИН ДО АЭРОПОРТ ПХУКЕТА
- 15-30 МИН ДО CENTRAL PHUKET

- **Пляж:** Пляж Камала
- **Шопинг:** Рынок Камала
- **Супермаркет:** Tops Daily Kamala
- **Рестораны:** HQ Beach Lounge